

# Q-Line: Industrial Clip Shelving

- 1 Strong Shelves**  
Shelf corners are fully lapped and welded for extra strength, allowing for support of up to 1,000 lbs per shelf, evenly distributed.
- 2 Easily Adjustable**  
Shelves can be adjusted quickly and easily in 1" increments to make maximum use of vertical space.
- 3 Three Post Options**  
Offset Angle for stand-alone units.  
Standard Beaded for long runs of shelving.  
Heavy Beaded for long runs of shelving with heavier loads.
- 4 Shelf Clips**  
13-Gauge compression clips make adding shelves simple.
- 5 Locater Slot**  
Specially designed square locater slots allow for easy adjustability.
- 6 Easily Expand a Row of Shelving**  
Shared posts simplify connecting shelving units.
- 7 Open & Closed Style**



**Open Style**  
Easy access to items



**Closed Style**  
Ideal for storing small or loose items

- 8 Durable Finish**  
Painted with a tough, long lasting epoxy finish.

#### Available Colors



## Post Options



**Offset Angle Posts** are used for stand-alone units or as rear posts in conjunction with beaded posts in front.

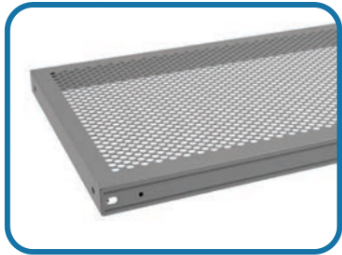


**Standard Beaded Posts** are used as a common front post on long runs of shelving. Narrow profile offers unobstructed shelf access.



**Heavy Beaded Posts** are used for heavier load situations as common front post on long runs of shelving. Narrow profile offers unobstructed shelf access.

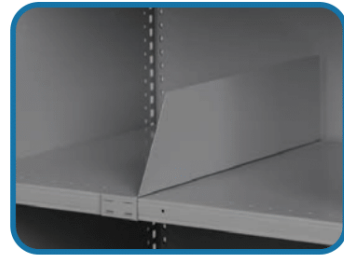
## Accessories/Options



**Perforated Shelves** helps to meet fire codes by allowing sprinkler water to reach all levels.



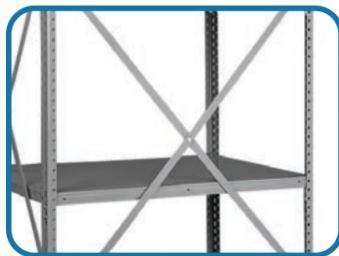
**Shelf Boxes** feature welded steel construction and a selection of six box sizes.



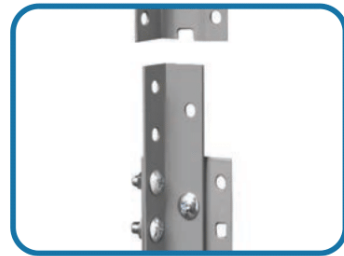
**Sliding Dividers** can be placed anywhere along shelves for maximum versatility. Includes built-in label holder.



**End Sway Braces** provide rigidity by keeping the shelving unit perfectly square even when heavily loaded.



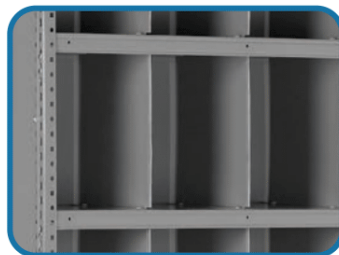
**Back Sway Braces** maintain the unit's vertical alignment to assure that even the heaviest loads can be safely stored.



**Splice Plates** are used to splice two uprights together.



**Label Holders** provide a way to locate and identify stored items.



**Shelf Dividers** are available in 15 sizes and create custom sized bins.



**Bin Fronts** keep parts from spilling off shelves.